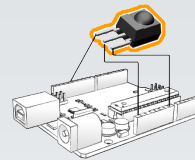


3 Axis Accelerometer



- Type: Module
- Application: Add On Module
Measure acceleration and orientation
- Dimensions: 21(L) x 15(W) x 11(H)mm

3 Axis Accelerometer Module Overview:

This module allows you to measure acceleration, detect impacts and determine orientation. Perfect for robotics projects

Specifications	
	3 Axis Accelerometer Module
Protocol	Analog(1 Channel per axis)
Measurement Range	+/-3g
Operating Voltage	3.3VDC - 5VDC
Chipset	ADXL335
Dimensions	21(L) x 15(W) x 11(H)

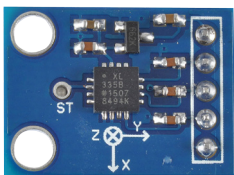
Pinout		
Module	Duinotech	Function
VCC	5V	Power
X Out	A0	X axis acceleration
Y Out	A1	Y axis acceleration
Z Out	A2	Z axis acceleration
GND	GND	Ground Connection

What is included: 1 x Accelerometer Module

Essential Accessories: Jumper Leads (WC6028)

Optional Accessories:

3 Axis Accelerometer Module Sample Projects:



Did you know:

An Accelerometer cannot detect rotation around a vertical axis, Try a gyroscope or compass sensor



Distributed by:
TechBrands by Electus Distribution Pty. Ltd.
Ph: 1300 738 555
www.techbrands.com
Made in China