

# ***POWERTECH***

## **Phone Cradle with 15W Wireless Charger**



### **User Manual HS-9062**

## Box Contents:



1 x Wireless Charger



1 x Suction  
Cup Mount



1 x Air Vent Mount



1 x USB-C  
Power Cable

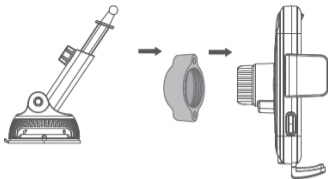
# Product Diagram:



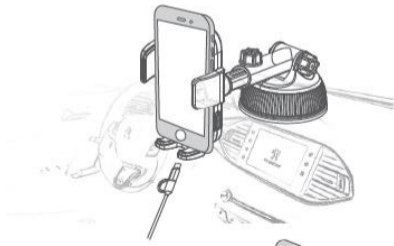
## **Installation:**

### **Suction Cup Mount:**

1. Unscrew the adjustable mounting ring knob from the phone cradle. Place it over the end of the suction cup mount.
  
2. Attach the phone cradle to the suction cup mount and tighten the adjustable mounting ring knob so the cradle and suction cup mount are secured tightly.

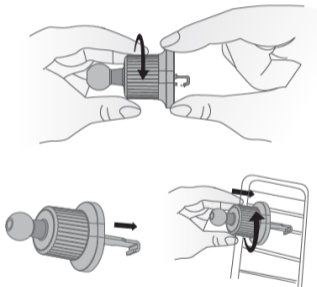


3. Peel the plastic from the bottom of the suction cup mount and place it on the windscreen of your car or dashboard.



## Air Vent Mount:

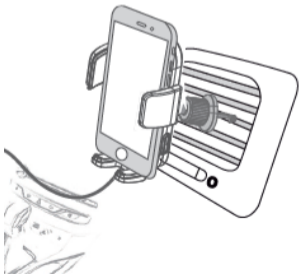
1. Screw the adjustable vent mount clockwise to loosen the adjustment and the hook will slowly come out.



2. Place the hook and latch it on to your air vent. Screw the adjustment anti clockwise to

tighten the adjustment and fix the mount securely to your air vent.

3. Unscrew the adjustable mounting ring knob from the phone cradle. Place it over the end of the air vent mount and tighten the adjustable mounting ring knob securely.



## **Power:**

1. Insert the USB power cable in a 5VDC/9VDC USB car charger (not included).
2. Insert the USB-C plug in to the USB power socket of the phone cradle.
3. The LED status indicator will turn green once it has been powered on.

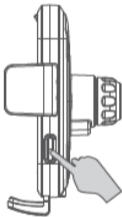


**Note: It is suggested to use a Qualcomm® Quick Charge™ 3.0 USB car charger for fast charging. Please check to see if your device supports quick charge otherwise it will charge at 5W.**

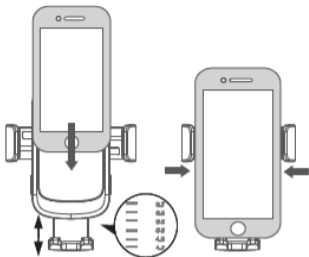
## Operation:

### Charging:

1. Press the lock/release button to open the phone clamps.



2. Slide down the adjustable holder located at the bottom of the cradle and slide your smart phone into the cradle.



3. The LED status indicator will turn blue once charging has started.

**Note:** You may need to change the position of the adjustable holder at the bottom of the cradle. The wireless charging pads are in a different location depending on the type of smartphone.

# Troubleshooting:

<b>Problem:</b>	<b>Solution:</b>
<b>Will not charge device</b>	Ensure your smartphone supports Qi wireless charging
	Ensure the mobile device is placed on the charging pad correctly and adjust the adjustable foot holder accordingly
	Restart your mobile device and wireless charger

<b>Will not charge device</b>	Take off your phone case as it may be interfering with the wireless charger
<b>Will not power on</b>	Ensure the USB cable is connected properly to a suitable USB car charger

## **Safety:**

1. Do not place any metal objects, magnets, magnetic stripe cards or metal phone cases between the mobile device and the charger as it may not work properly.
2. Keep the wireless charger at least 20cm away from any implantable medical devices such as a pacemakers or cochlear, etc. to avoid interference with the medical device.
3. Do not open the case of the wireless charger to avoid damage and injury.

4. Keep the wireless charger away from high temperatures as it may cause damage to the speaker and battery.
5. Do not expose the wireless charger to water, moisture or liquids to prevent the unit from damage.

## Specifications:

Input: 5VDC @ 2A, 9VDC @ 1.7A

Voltage Output: 5VDC, 9VDC

Current Output: 5V @ 1A (5W)

9V @ 0.8A (7.5W)

9V @ 1.1A (10W)

9V @ 1.66A 15W)

Output Power:

5W/7.5W/10W/15W

Charging Efficiency: 73% (Max)

Charging Distance:  $\leq 7$ mm

Battery: 3.7V Li-ion, 60mA

Battery Standby Time: Up to 30

Days

Dimensions: 119(H) x 75(W) x

34(D)mm



Distributed by:  
Electus Distribution Pty. Ltd.  
46 Eastern Creek Drive, Eastern Creek  
NSW 2766 Australia  
Ph: 1300 738 555  
Int'l: +61 2 8832 3200  
Fax: 1300 738 500  
[www.electusdistribution.com.au](http://www.electusdistribution.com.au)